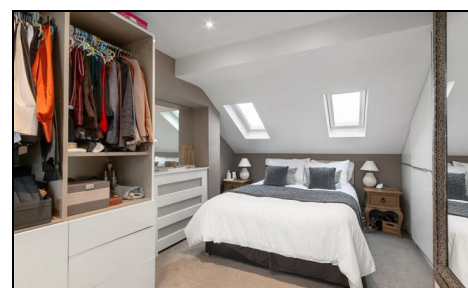
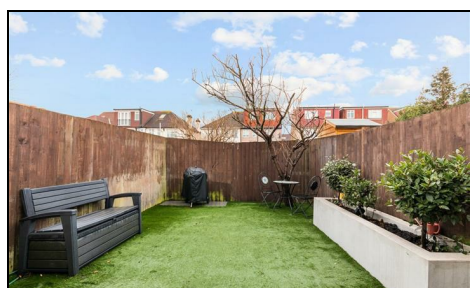


## Gore Road Raynes Park, SW20 8JN

£875,000 Freehold



This attractive, brick fronted **THREE DOUBLE BEDROOM, TWO BATHROOM** Edwardian Apostle House is perfectly located for Raynes Park High Street and Station (0.1 mile). There is a gorgeous open plan kitchen/dining/family room, with plantation shutters, bi folding doors, downstairs W.C/utility area, modern fitted kitchen with separate island and a low maintenance West facing garden. On the first and second floor there are three good size bedrooms (master with en-suite) and a lovely family bathroom.

## GORE ROAD, SW20

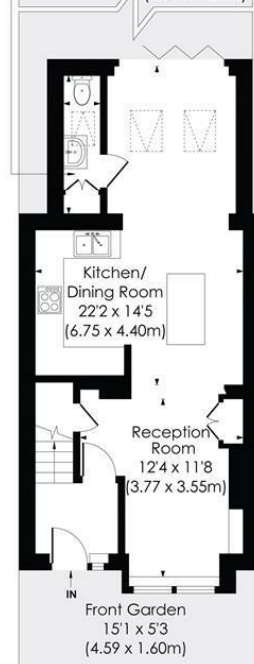
Approx. Gross Internal Floor Area

1027 Sq. ft./95.45 Sq. m (Including Reduced Height)

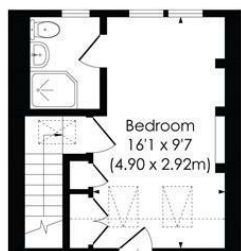
998 Sq. ft./92.75 Sq. m (Excluding Reduced Height)

Utility Room  
9'2 x 2'6  
(2.79 x 0.77m)

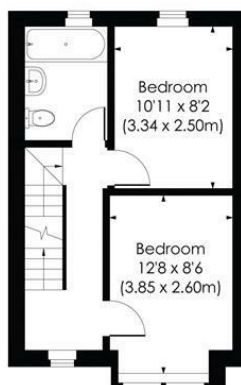
Garden  
19'5 x 13'10  
(5.91 x 4.22m)



GROUND FLOOR



Eaves  
SECOND FLOOR



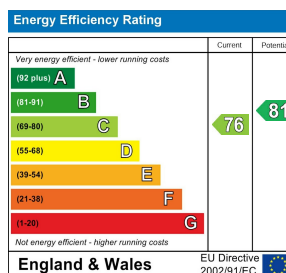
FIRST FLOOR

© Pixangle Property Marketing Ltd. info@pixangle.com Tel: 0208 870 2118

pixangle  
PROPERTY MARKETING

This floor plan has been prepared for the purpose of illustration only in accordance with the latest RICS code of measuring practice and is not to scale. All measurements and areas are approximate and whilst every effort has been made to ensure the accuracy of the plan contained here, no responsibility is taken for any error, omission or misstatement.

- Three Double Bedrooms
- Fully Extended Apostle House
- 0.1 Miles To Raynes Park Station & High Street
- Approx. 20 Minutes To Waterloo (Zone 4)
- West-Facing Garden
- Stunning Open Plan Living Space
- Modern Kitchen With Island & Breakfast Bar
- Utility Room & Downstairs WC
- EPC Rating - C
- Council Tax Band - E



For Free Mortgage Quote and Best Mortgage Rates, call Ellisons Mortgage Advisor on 0208 944 9595



Although these particulars are believed to be correct, their accuracy is not guaranteed and they do not form part of any contract.

Celebrating 30 years of successful Sales and Lettings in Merton

